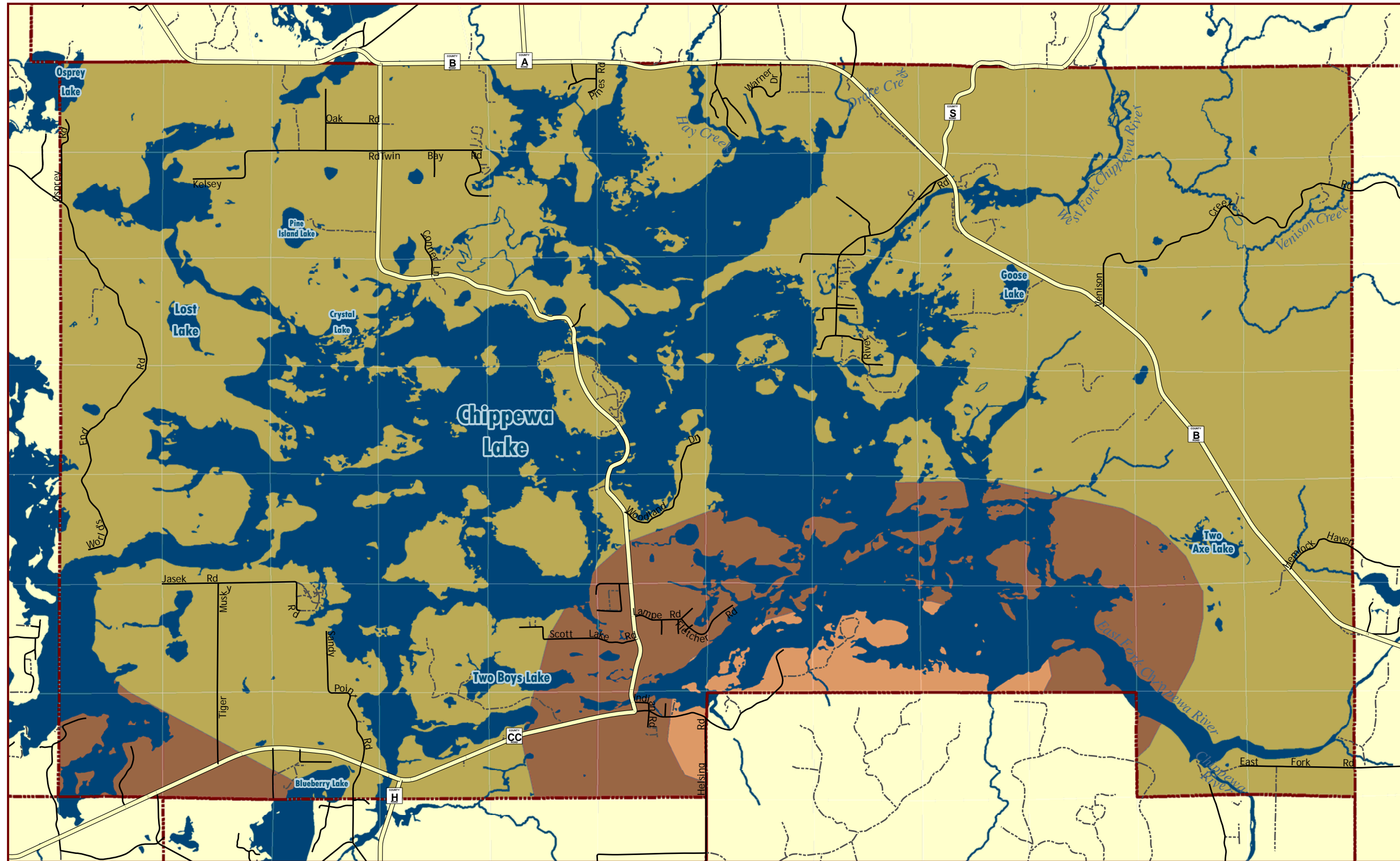


# Town of Hunter, Sawyer County, Wisconsin

Map 5.2 - Bedrock Geology  
Final Draft 5/11/2009

## Bedrock Depth

- Bedrock is between 50 feet and 5 feet from the land surface
- Bedrock is between 100 feet and 50 feet from the land surface
- Bedrock is greater than 100 feet from the land surface



Bedrock in the Town of Hunter consists of igneous, metamorphic, and volcanic rock.

