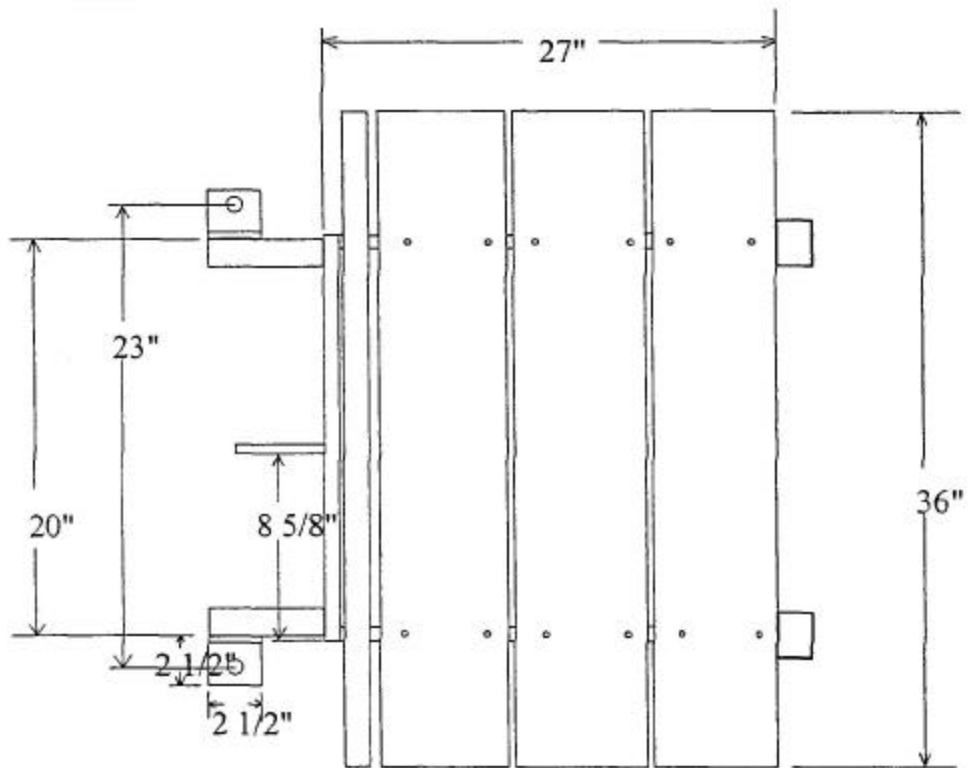
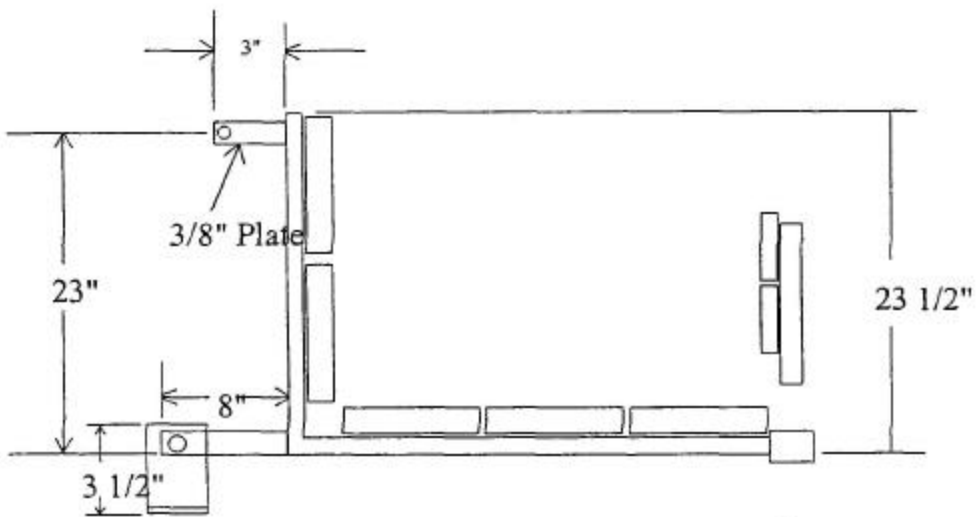


KODIAK

KARRY-ALL

NON - FASTHITCH

By Ron Whiting





NOTES:

2" angle iron for most all construction

Bottom angle iron 2 3/4" angle iron

All hardware 1/2"

Karry-All mounts to two outside bolt holes on the drawbar 23" center to center

17" total vertical travel

Boards are 11" wide and 36" long 3/4" thick

Angle brackets that bolt to the drawbar are 3/8" angle 3 1/2" X 2 1/2"

All holes 5/8" DIA.

KODIAK KARRY-ALL
Non- Fasthitch